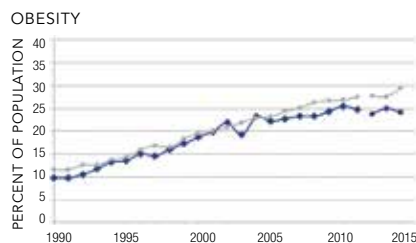
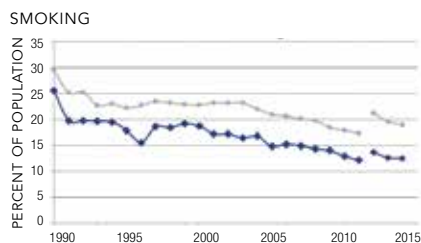


California

| | 2014 VALUE | 2014 RANK | NO 1 STATE |
|---|------------|-----------|------------|
| Behaviors | | | |
| Smoking (Percent of adult population) | 12.5 | 2 | 10.3 |
| Binge Drinking (Percent of adult population) | 17.4 | 34 | 9.6 |
| Drug Deaths (Deaths per 100,000 population) | 11.0 | 12 | 3.0 |
| Obesity (Percent of adult population) | 24.1 | 4 | 21.3 |
| Physical Inactivity (Percent of adult population) | 18.6 | 3 | 16.2 |
| High School Graduation (Percent of incoming ninth graders) | 82.0 | 22 | 93.0 |
| Community & Environment | | | |
| Violent Crime (Offenses per 100,000 population) | 423 | 35 | 123 |
| Occupational Fatalities (Deaths per 100,000 workers) | 3.2 | 7 | 2.2 |
| Infectious Disease (Combined score Chlamydia, Pertussis, <i>Salmonella</i> *) | -0.40 | 11 | -0.9 |
| <i>Chlamydia</i> (Cases per 100,000 population) | 444.9 | 28 | 233.0 |
| <i>Pertussis</i> (Cases per 100,000 population) | 2.1 | 2 | 1.6 |
| <i>Salmonella</i> (Cases per 100,000 population) | 12.1 | 15 | 6.8 |
| Children in Poverty (Percent of children) | 20.3 | 33 | 9.2 |
| Air Pollution (Micrograms of fine particles per cubic meter) | 13.9 | 50 | 4.9 |
| Policy | | | |
| Lack of Health Insurance (Percent of population) | 17.5 | 43 | 3.8 |
| Public Health Funding (Dollars per person) | \$104 | 12 | \$219 |
| Immunization—Children (Percent aged 19 to 35 months) | 69.3 | 28 | 82.1 |
| Immunization—Adolescents (Percent aged 13 to 17 years) | 72.6 | 10 | 81.3 |
| Clinical Care | | | |
| Low Birthweight (Percent of live births) | 6.7 | 10 | 5.7 |
| Primary Care Physicians (Number per 100,000 population) | 122.2 | 22 | 324.6 |
| Dentists (Number per 100,000 population) | 78.0 | 7 | 107.6 |
| Preventable Hospitalizations (Number per 1,000 Medicare beneficiaries) | 45.3 | 9 | 28.2 |
| ALL DETERMINANTS | 0.29 | 17 | 0.71 |
| OUTCOMES | | | |
| Diabetes (Percent of adult population) | 10.2 | 30 | 6.5 |
| Poor Mental Health Days (Days in previous 30 days) | 3.8 | 30 | 2.5 |
| Poor Physical Health Days (Days in previous 30 days) | 3.9 | 25 | 2.8 |
| Disparity in Health Status (Percent difference by education level**) | 38.6 | 50 | 15.5 |
| Infant Mortality (Deaths per 1,000 live births) | 4.6 | 4 | 4.2 |
| Cardiovascular Deaths (Deaths per 100,000 population) | 234.4 | 23 | 184.7 |
| Cancer Deaths (Deaths per 100,000 population) | 171.0 | 6 | 145.7 |
| Premature Deaths (Years lost per 100,000 population) | 5,590 | 4 | 5,345 |
| ALL OUTCOMES | 0.05 | 24 | 0.34 |
| OVERALL | 0.35 | 17 | 0.91 |

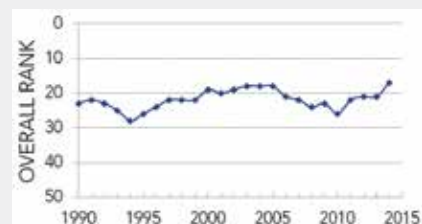
*Negative score denotes less disease than US average, positive score indicates more than US average
 **Difference in the percentage of adults aged 25 and older with vs without a high school education who report their health is very good or excellent



STATE ◆ NATION ● The 2012–2014 data in the above graphs are not directly comparable to prior years. See Methodology for additional information.

Overall Rank: 17

Change: ▲ 4
 Determinants Rank: 17
 Outcomes Rank: 24



Strengths:

- Low prevalence of smoking
- Low prevalence of obesity
- Low prevalence of physical inactivity

Challenges:

- High levels of air pollution
- Large disparity in health status by education level
- Moderate violent crime rate

Ranking:

California is 17th this year; it was 21st in 2013. The ranking for senior health in California was 18th in 2014.

Highlights:

- In the past 2 years, drug deaths decreased by 14 percent from 12.8 to 11.0 deaths per 100,000 population.
- In the past 2 years, high school graduation increased by 15 percent from 71.0 percent to 82.0 percent of incoming ninth graders.
- Since 1990, violent crime decreased by 54 percent from 918 to 423 offenses per 100,000 population.
- In the past 2 years, disparity in health status increased by 10 percent from a 35.1 percent difference to a 38.6 percent difference between adults aged 25 and older with vs without a high school education.
- In the past 2 years, diabetes increased by 15 percent from 8.9 percent to 10.2 percent of adults.

State Health Department Website:
www.cdph.ca.gov

| ECONOMIC ENVIRONMENT | CA | US |
|------------------------------------|----------|----------|
| Annual Unemployment Rate (2013) | 8.9 | 7.4 |
| Annual Underemployment Rate (2013) | 17.3 | 13.8 |
| Median Household Income (2013) | \$57,528 | \$51,939 |

| MEASURE | ADULT POPULATION AFFECTED |
|---------------------|---------------------------|
| Smoking | 3,348,000 |
| Obesity | 6,489,000 |
| Physical Inactivity | 5,449,000 |
| Diabetes | 2,970,000 |