

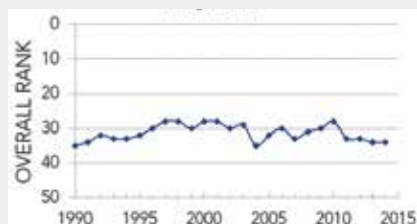
# Michigan

MICHIGAN

## Overall Rank: 34



Change: no change  
 Determinants Rank: 32  
 Outcomes Rank: 38



### Strengths:

- Low incidence of infectious disease
- Ready availability of dentists
- High immunization coverage among teens

### Challenges:

- High prevalence of obesity
- High prevalence of binge drinking
- Low rate of high school graduation

### Ranking:

Michigan is 34th this year; it was 34th in 2013. The ranking for senior health in Michigan was 20th in 2014.

### Highlights:

- In the past year, smoking decreased by 8 percent from 23.3 percent to 21.4 percent of adults. In 1990, 34.0 percent of Michigan adults smoked.
- In the past year, preventable hospitalizations decreased by 8 percent from 70.3 to 64.5 per 1,000 Medicare beneficiaries.
- In the past 2 years, immunization coverage among adolescents increased by 14 percent from 60.2 percent to 68.7 percent of adolescents aged 13 to 17 years.
- In the past 5 years, air pollution decreased by 27 percent from 12.1 to 8.8 micrograms of fine particles per cubic meter.
- Since 1990, violent crime decreased by 42 percent from 780 to 455 offenses per 100,000 population.

### State Health Department Website:

[www.michigan.gov/mdch](http://www.michigan.gov/mdch)

	2014 VALUE	RANK	NO 1 STATE
<b>Behaviors</b>			
Smoking (Percent of adult population)	21.4	37	10.3
Binge Drinking (Percent of adult population)	18.9	40	9.6
Drug Deaths (Deaths per 100,000 population)	13.9	31	3.0
Obesity (Percent of adult population)	31.5	40	21.3
Physical Inactivity (Percent of adult population)	23.0	20	16.2
High School Graduation (Percent of incoming ninth graders)	77.0	39	93.0

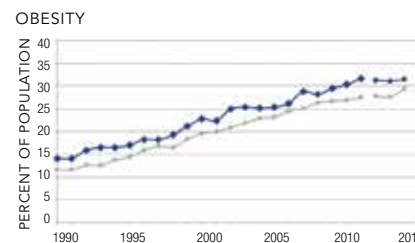
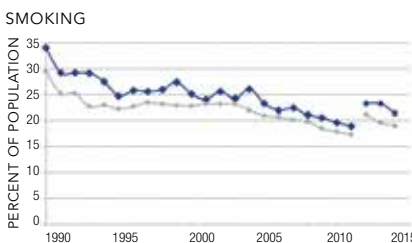
<b>Community &amp; Environment</b>			
Violent Crime (Offenses per 100,000 population)	455	39	123
Occupational Fatalities (Deaths per 100,000 workers)	3.9	18	2.2
Infectious Disease (Combined score Chlamydia, Pertussis, <i>Salmonella</i> *)	-0.30	15	-0.9
<i>Chlamydia</i> (Cases per 100,000 population)	481.6	36	233.0
<i>Pertussis</i> (Cases per 100,000 population)	8.6	22	1.6
<i>Salmonella</i> (Cases per 100,000 population)	10.1	7	6.8
Children in Poverty (Percent of children)	19.8	31	9.2
Air Pollution (Micrograms of fine particles per cubic meter)	8.8	22	4.9

<b>Policy</b>			
Lack of Health Insurance (Percent of population)	11.2	15	3.8
Public Health Funding (Dollars per person)	\$53	40	\$219
Immunization—Children (Percent aged 19 to 35 months)	70.0	24	82.1
Immunization—Adolescents (Percent aged 13 to 17 years)	68.7	18	81.3

<b>Clinical Care</b>			
Low Birthweight (Percent of live births)	8.4	34	5.7
Primary Care Physicians (Number per 100,000 population)	122.2	22	324.6
Dentists (Number per 100,000 population)	62.3	18	107.6
Preventable Hospitalizations (Number per 1,000 Medicare beneficiaries)	64.5	38	28.2
<b>ALL DETERMINANTS</b>	-0.10	32	0.71

<b>OUTCOMES</b>			
Diabetes (Percent of adult population)	10.4	31	6.5
Poor Mental Health Days (Days in previous 30 days)	3.9	38	2.5
Poor Physical Health Days (Days in previous 30 days)	4.1	36	2.8
Disparity in Health Status (Percent difference by education level**)	29.7	29	15.5
Infant Mortality (Deaths per 1,000 live births)	6.7	35	4.2
Cardiovascular Deaths (Deaths per 100,000 population)	282.4	42	184.7
Cancer Deaths (Deaths per 100,000 population)	199.7	35	145.7
Premature Deaths (Years lost per 100,000 population)	7,574	32	5,345
<b>ALL OUTCOMES</b>	-0.11	38	0.34
<b>OVERALL</b>	-0.21	34	0.91

\*Negative score denotes less disease than US average, positive score indicates more than US average  
 \*\*Difference in the percentage of adults aged 25 and older with vs without a high school education who report their health is very good or excellent



STATE ◆ NATION ● The 2012–2014 data in the above graphs are not directly comparable to prior years. See Methodology for additional information.

ECONOMIC ENVIRONMENT	MI	US
Annual Unemployment Rate (2013)	8.8	7.4
Annual Underemployment Rate (2013)	15.3	13.8
Median Household Income (2013)	\$48,801	\$51,939

MEASURE	ADULT POPULATION AFFECTED
Smoking	1,597,000
Obesity	2,289,000
Physical Inactivity	1,756,000
Diabetes	790,000