

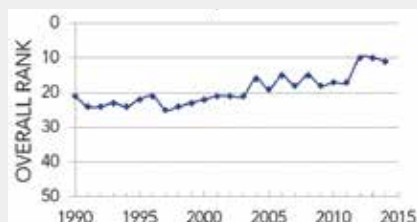
New Jersey

NEW JERSEY

Overall Rank: 11



Change: ▼ 1
 Determinants Rank: 12
 Outcomes Rank: 14



Strengths:

- Low prevalence of smoking
- Low incidence of infectious disease
- Ready availability of dentists

Challenges:

- High prevalence of low birthweight
- High rate of preventable hospitalizations
- Large disparity in health status by education level

Ranking:

New Jersey is 11th this year; it was 10th in 2013. The ranking for senior health in New Jersey was 24th in 2014.

Highlights:

- In the past year, smoking decreased by 9 percent from 17.3 percent to 15.7 percent of adults. It was 27.9 percent in 1990.
- In the past 2 years, obesity increased by 11 percent from 23.7 percent to 26.3 percent of adults.
- In the past 2 years, drug deaths increased by 71 percent from 6.8 to 11.6 deaths per 100,000 population.
- In the past 5 years, preventable hospitalizations decreased by 23 percent from 79.0 to 60.8 per 1,000 Medicare beneficiaries.
- Since 1990, infant mortality decreased by 50 percent from 9.6 to 4.8 deaths per 1,000 live births.

State Health Department Website:

www.state.nj.us/health

	2014 VALUE	RANK	NO 1 STATE
Behaviors			
Smoking (Percent of adult population)	15.7	5	10.3
Binge Drinking (Percent of adult population)	16.3	21	9.6
Drug Deaths (Deaths per 100,000 population)	11.6	17	3.0
Obesity (Percent of adult population)	26.3	12	21.3
Physical Inactivity (Percent of adult population)	24.1	27	16.2
High School Graduation (Percent of incoming ninth graders)	87.0	9	93.0

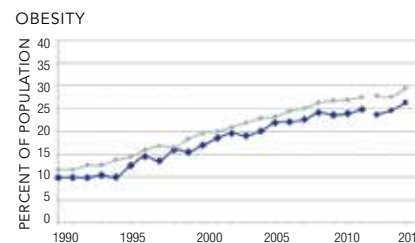
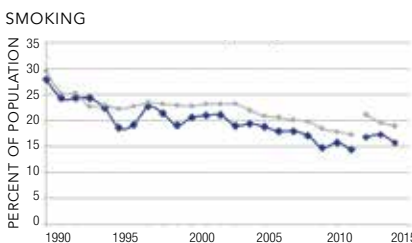
	2014 VALUE	RANK	NO 1 STATE
Community & Environment			
Violent Crime (Offenses per 100,000 population)	290	20	123
Occupational Fatalities (Deaths per 100,000 workers)	3.7	11	2.2
Infectious Disease (Combined score Chlamydia, Pertussis, <i>Salmonella</i> *)	-0.59	5	-0.9
<i>Chlamydia</i> (Cases per 100,000 population)	309.2	7	233.0
<i>Pertussis</i> (Cases per 100,000 population)	15.8	32	1.6
<i>Salmonella</i> (Cases per 100,000 population)	13.0	19	6.8
Children in Poverty (Percent of children)	16.5	21	9.2
Air Pollution (Micrograms of fine particles per cubic meter)	9.0	24	4.9

	2014 VALUE	RANK	NO 1 STATE
Policy			
Lack of Health Insurance (Percent of population)	13.0	23	3.8
Public Health Funding (Dollars per person)	\$61	33	\$219
Immunization—Children (Percent aged 19 to 35 months)	72.9	14	82.1
Immunization—Adolescents (Percent aged 13 to 17 years)	69.6	15	81.3

	2014 VALUE	RANK	NO 1 STATE
Clinical Care			
Low Birthweight (Percent of live births)	8.2	31	5.7
Primary Care Physicians (Number per 100,000 population)	143.7	8	324.6
Dentists (Number per 100,000 population)	83.0	2	107.6
Preventable Hospitalizations (Number per 1,000 Medicare beneficiaries)	60.8	34	28.2
ALL DETERMINANTS	0.34	12	0.71

	2014 VALUE	RANK	NO 1 STATE
OUTCOMES			
Diabetes (Percent of adult population)	9.2	16	6.5
Poor Mental Health Days (Days in previous 30 days)	3.3	11	2.5
Poor Physical Health Days (Days in previous 30 days)	3.4	8	2.8
Disparity in Health Status (Percent difference by education level**)	30.6	35	15.5
Infant Mortality (Deaths per 1,000 live births)	4.8	6	4.2
Cardiovascular Deaths (Deaths per 100,000 population)	246.8	28	184.7
Cancer Deaths (Deaths per 100,000 population)	185.5	18	145.7
Premature Deaths (Years lost per 100,000 population)	5,837	8	5,345
ALL OUTCOMES	0.14	14	0.34
OVERALL	0.47	11	0.91

*Negative score denotes less disease than US average, positive score indicates more than US average
 **Difference in the percentage of adults aged 25 and older with vs without a high school education who report their health is very good or excellent



STATE ◆ ◆ NATION ● ● The 2012–2014 data in the above graphs are not directly comparable to prior years. See Methodology for additional information.

ECONOMIC ENVIRONMENT	NJ	US
Annual Unemployment Rate (2013)	8.2	7.4
Annual Underemployment Rate (2013)	14.7	13.8
Median Household Income (2013)	\$61,782	\$51,939

MEASURE	ADULT POPULATION AFFECTED
Smoking	1,020,000
Obesity	1,657,000
Physical Inactivity	1,660,000
Diabetes	633,000